

Model WDW-300S Superior Type Electromechanical UTM

Tensile test at load (300kN) with full speed of 1000mm/min pass the exam and ready to delivery.

Featured parameters:

- Load capacity: 300kN
- Load accuracy: $\leq \pm 0.5\%$ from 1/500 to 1/1 of full scale
- Strain measurement accuracy: $\leq \pm 0.5\%$ of 1/500 to 1/1 of full scale
- Position resolution: 0.025 μ m
- Position accuracy: $\pm 0.1\%$ indicated value or ± 0.01 mm, whichever is larger
- Speed range: 0.005-1000mm/min
- Return speed of the crosshead: 1200mm/min
- Maximum speed at full load: 1000mm/min
- Maximum load at full speed: 300kN
- Data sampling rate: 1000Hz;
- Verified by ISO 6892 method A Strain Control Function

Below are pictures for some key points:



Load Frame of this WDW-300S Superior machine



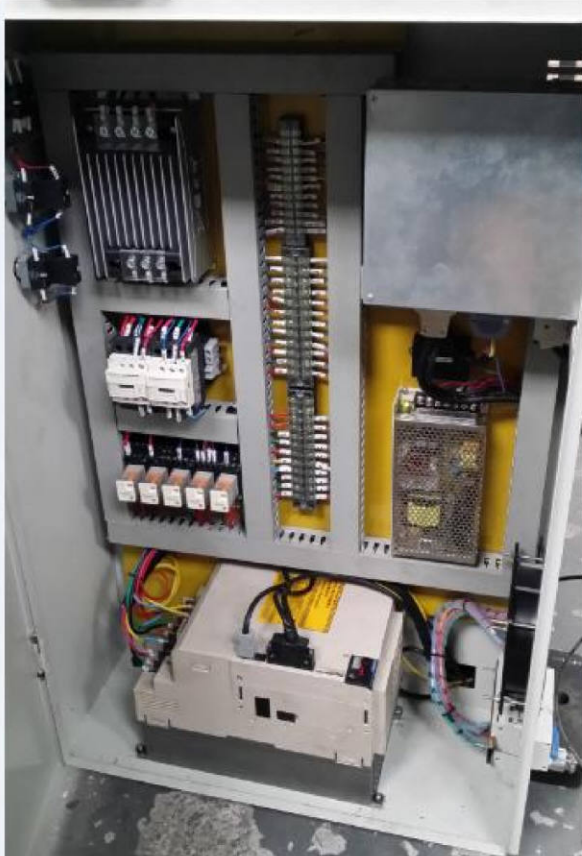
Advanced EDC 220 Controller from Doli, Germany with 1000Hz sampling rate



Advanced Load Cell from Celtron, USA



Epsilon Extensometer Model 3542-010mm-050-ST used for strain control function as per ISO 6892 Method A



Electrical cabinet with reliable parts from Schneider



Tensile test

